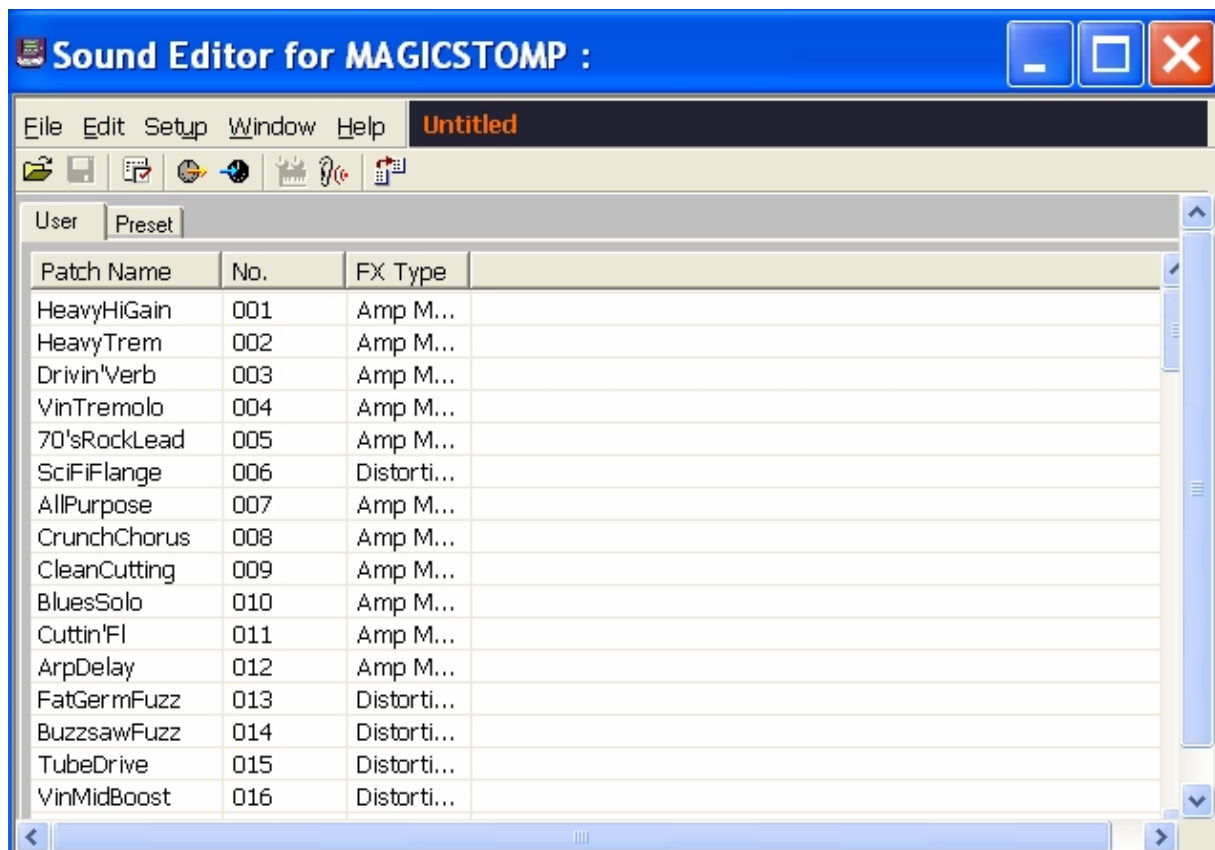


How to load the complete patch library into your Yamaha MagicStomp.

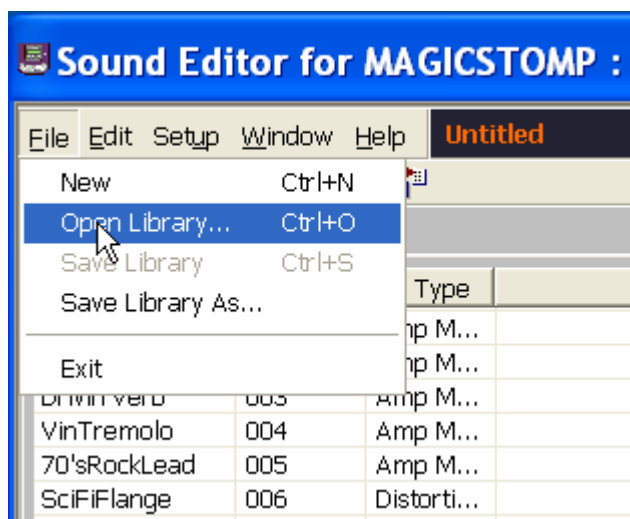
Before you begin, you have to have, a working MIDI connection between your Yamaha MagicStomp and your Computer.

1 Open the MagicStomp editor.

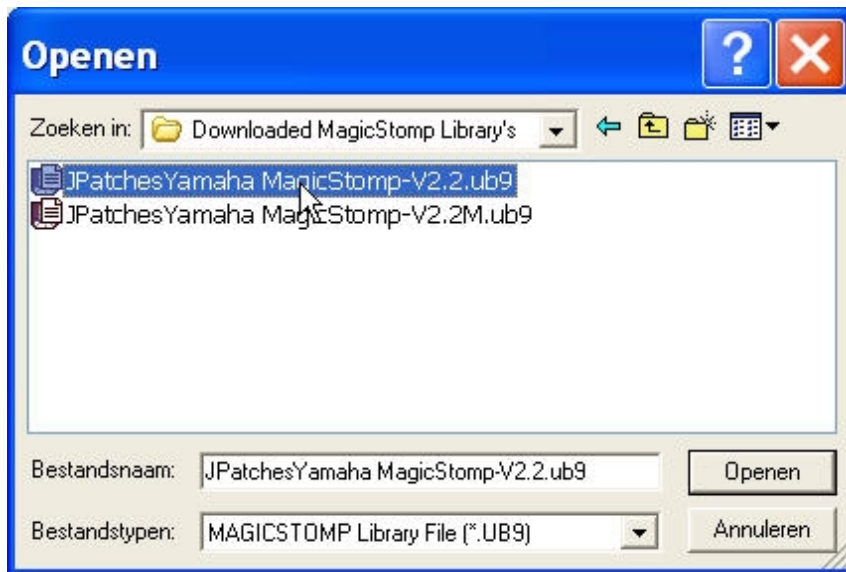
The following screen appears.



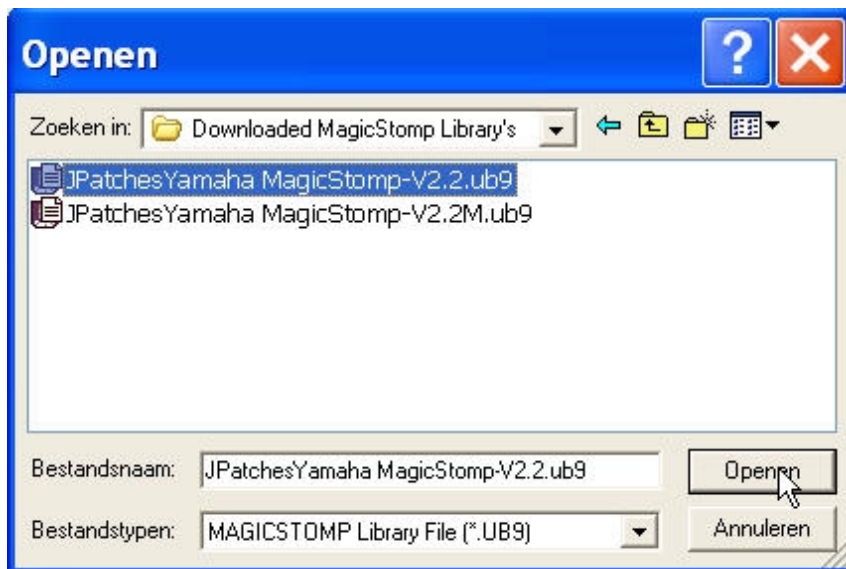
2 Click on File and click on Open Library



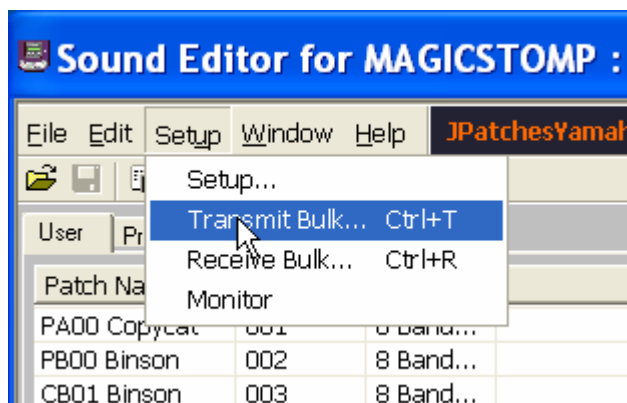
3 Select the desired library and highlight it



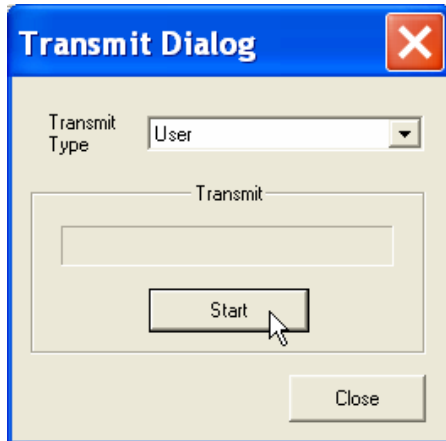
4 Click on Open.



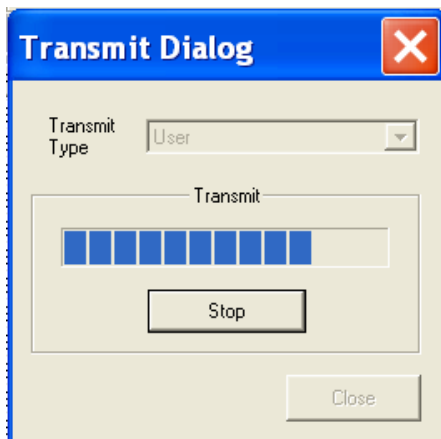
5 Click on Setup and Transmit Bulk



6 Click on Start



The following screen appears

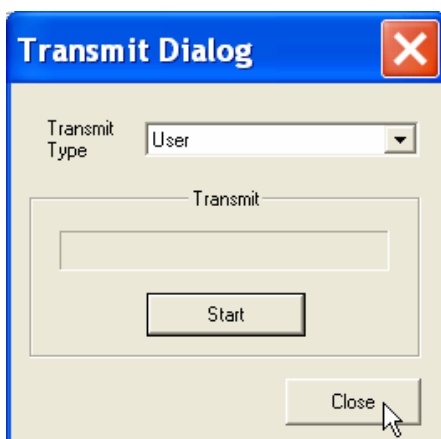


While the patches are transmitted to your MagicStomp the MagicStomp display should say:

Bulk in All!

Now Patch: nn (nn is the number of the patch loaded at that moment)

When ready the MagicStomp display will return to its normal status.



7 Close all screens

The Yamaha MagicStomp now contains the desired Patches.